

# Delta FMX 788

## Specifications

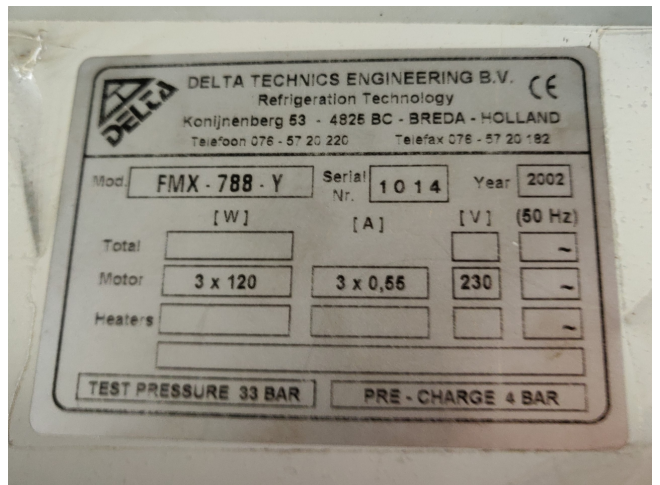
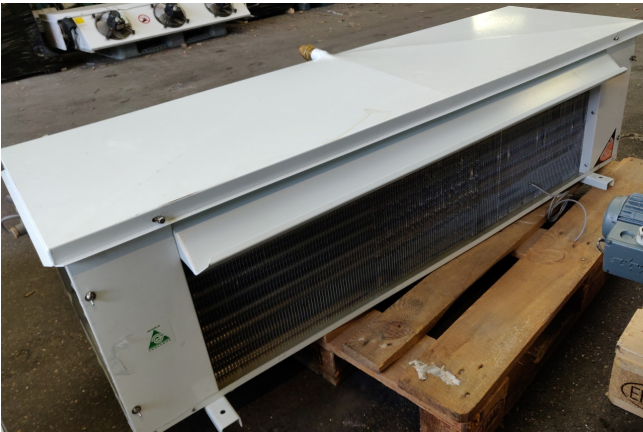
Marka	Delta
Typ	FMX 788
Ogólna wydajność w kW	6.67
Czynnik chłodzący	Freon
Liczba wentylatorów	3
Średnica wentylatora	7 mm
Rozmrażanie	Electric
Przepływ powietrza w m <sup>3</sup> /h	4200
Rozmiary	1450x720x450 mm (LxWxH)
Uwagi	YOB 2002
Stock	1



## Description

### Used Delta FMX 788

Used Delta FMX 788 evaporator build in 2002 with electric defrosting and 3 Fans 4200 m<sup>3</sup>/h, 1450x720x450 mm (LxWxH) \*\*Why choose for HOSBV? Were not only the largest used refrigeration specialist in Europe, but also, we deliver all equipment including an extensive test, warranty and industrial cleaning. Optional we can arrange shipment and export documents.



Model	Cap. in kW		Ventilatoren		
	R404a	R134a	lucht	aantal	diam.
	DT1 -8°/8K	DT1 -8°/8K	m <sup>3</sup> /h		mm

**Lamellenafstand 7,25 mm**

FMX 128*	0,98	0,86	800	1	250
FMX 168*	1,35	1,26	1700	1	300
FMX 178*	1,54	1,38	1650	2	250
FMX 208*	1,63	1,49	1650	1	300
FMX 248	2,08	1,62	1600	2	250
FMX 268	1,97	1,78	1500	1	300
FMX 288	2,16	1,92	1400	1	300
FMX 368	3,12	2,88	2400	3	250
FMX 408	3,30	3,07	3250	2	300
FMX 488	4,15	3,86	3200	4	250
FMX 528	4,15	3,85	3000	2	300
FMX 548	4,46	4,14	2800	2	300
FMX 558	4,38	4,03	3000	1	400
FMX 768	6,28	5,83	4500	3	300
FMX 788	6,67	6,18	4200	3	300
FMX 858	6,35	6,34	4800	2	400
FMX 908	7,23	6,52	4600	2	400
FMX 1048	8,84	7,53	5600	4	300
FMX 1108	8,83	8,21	6000	2	400